

## Applications

- Shipping Containers
- Silos
- Wind Power Plates
- Heavy Machinery
- Oil Pumps
- Railroad Tracks
- and almost any other application.

elasto-Sandwich-Bars are used in a very wide variety of application. The parts will absorb the vibration, movements and shock to protect the surrounding equipments.

### CHARACTERISTICS AND CAPABILITIES OF ELASTO-SANDWICH-BARS.

-Motion Isolation: Production efficiency is only possible with preventable downtime. elasto-Sandwich-Bars will protect sensitive electric motors from motion.

-Vibration Absorption: Most machinery transfers vibrations to the immediate environment. With the installation of our elasto-Sandwich-Bars the vibration transfer will be prevented.

-Noise Reduction: All Machinery not isolated produce motion and noise. An effective isolation will be evident with the installation of our elasto-Sandwich-Bars

### ELASTO-SANDWICH-BARS (ADVANCED DESIGN)

The design of the elasto-Sandwich-Bars are developed to absorb forces in shear and compression. These mounts have the unique ability to be custom designed without expensive tooling, which is very favorable for prototypes, small production or fast turnaround time. The parts can be used as a whole but also be cut, tapped, drilled and precise machined to fit to any required application.

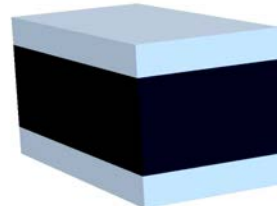
-Load Capacity: Different sizes for most applications. The load range of these 2 Meters Sandwich-Bars are from 10 kN (2,200 LBS) up to a 35,000 kN (7,850,000 LBS). Cut and drilled the load capacity can be as low as 100 N (20 lbs)

-Maintenance Free and Long Term Durability: The standard rubber compound is developed for the general industry and should not be used for high dynamic application or for extreme environment condition.

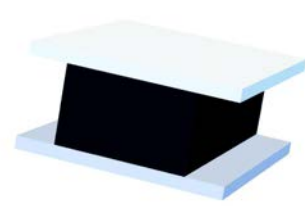
-elastometall provides over 800 different rubber compounds for all industry applications.



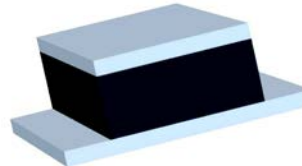
elasto-A-Sandwich-Bars



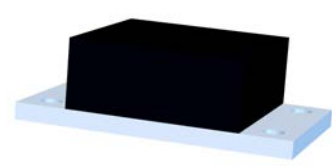
elasto-B-Sandwich-Bars



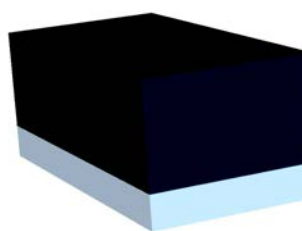
elasto-C-Sandwich-Bars



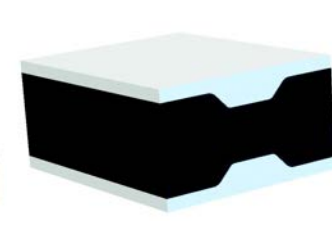
elasto-D-Sandwich-Bars



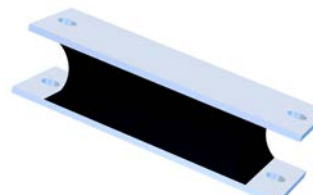
elasto-F-Sandwich-Bars



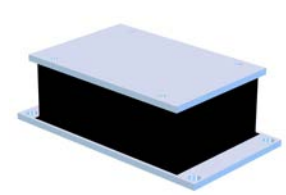
elasto-AII-Sandwich-Bars



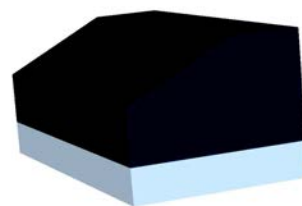
elasto-BT-Sandwich-Mounts



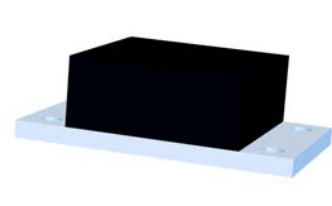
elasto-B-Sandwich-Mounts



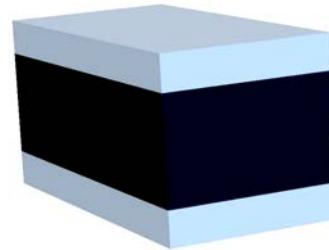
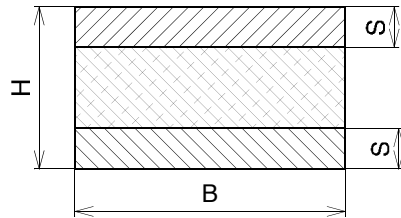
elasto-FS-Sandwich-Bars



elasto-D-Sandwich-Mounts

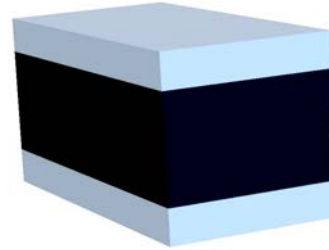
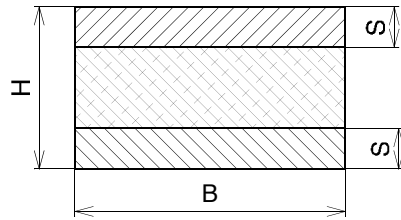


The information herein is general in nature and is not intended for specific application purposes. We suggest that product samples be tested and approved based on your intended application. We reserve the right to alter specifications or withdraw products without prior notice.



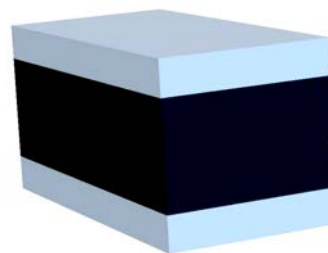
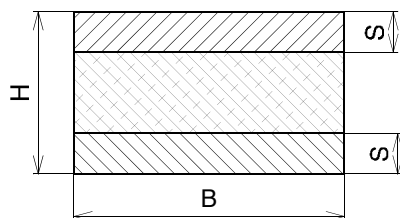
Part Number	Dia. x Height mm (Inch) (B) x (H)	Length mm (Inch) (L)	Thickness mm (Inch) (S)	Quality NR  ShoreA Duro	Compression		Shear	
					Max. Static Load		Max. Static Load	
					kN	lbs	kN	lbs
A2530w	25.4 x 30 (1) x (1.18)	2000 (78.74)	6.3 (.25)	43	59	13264	3.6	809
A2530				57	109	24538	7	1497
A2530h				68	177	39791	11	2428
A3030w	30 x 30 (1.18) x (1.18)	2000 (78.74)	10 (.39)	43	86	19334	4.2	944
A3030				57	159	35767	8	1747
A3030h				68	258	58001	13	2833
A4020w	40 x 20 (1.57) x (.79)	2000 (78.74)	1.2 10	43	2197	493905	5.7	1281
A4020				57	4064	913725	11	2371
A4020h				68	6591	1481716	17	3844
A4030w	40 x 30 (1.57) x (1.18)	2000 (78.74)	10 (.39)	43	239	53729	5.7	1281
A4030				57	442	99399	11	2371
A4030h				68	717	161188	17	3844
A5030w	50.8 x 30 (2) x (1.18)	2000 (78.74)	10 (.39)	43	762	171304	7.1	1596
A5030				57	1410	316913	13	2953
A5030h				68	2286	513913	21	4788
A5040w	50.8 x 40 (2) x (1.57)	2000 (78.74)	10 (.39)	43	241	54179	7.1	1596
A5040				57	446	100231	13	2953
A5040h				68	723	162537	21	4788
A5050w	50.8 x 50 (2) x (1.97)	2000 (78.74)	10 (.39)	43	135	30349	7.1	1596
A5050				57	250	56146	13	2953
A5050h				68	405	91048	21	4788
A6340w	63.5 x 40 (2.5) x (1.57)	2000 (78.74)	10 (.39)	43	441	99141	9.1	2046
A6340				57	816	183410	17	3785
A6340h				68	1323	297422	27	6137
A6350w	63.5 x 50 (2.5) x (1.97)	2000 (78.74)	10 (.39)	43	236	53055	9.1	2046
A6350				57	437	98152	17	3785
A6350h				68	708	159165	27	6137
A6360w	63.5 x 60 (2.5) x (2.36)	2000 (78.74)	10 (.39)	43	160	35969	9.1	2046
A6360				57	296	66543	17	3785
A6360h				68	480	107908	27	6137

The information herein is general in nature and is not intended for specific application purposes. We suggest that product samples be tested and approved based on your intended application. We reserve the right to alter specifications or withdraw products without prior notice.



Part Number	Dia. x Height mm (Inch) (B) x (H)	Length mm (Inch) (L)	Thickness mm (Inch) (S)	Quality NR  ShoreA Duro	Compression		Shear	
					Max. Static Load		Max. Static Load	
					kN	lbs	kN	lbs
A7050w	70 x 50 (2.76) x (1.97)	2000 (78.74)	10 (.39)	43	654	147025	10	2248
A7050				57	1210	271996	19	4159
A7050h				68	1962	441075	30	6744
A7060w	70 x 60 (2.76) x (2.36)	2000 (78.74)	10 (.39)	43	325	73063	10	2248
A7060				57	601	135166	19	4159
A7060h				68	975	219189	30	6744
A7070w	70 x 70 (2.76) x (2.76)	2000 (78.74)	10 (.39)	43	210	47210	10	2248
A7070				57	389	87338	19	4159
A7070h				68	630	141630	30	6744
A7650w	76.2 x 50 (3) x (1.97)	2000 (78.74)	15.8 (.62)	43	818	183894	10.8	2428
A7650				57	1513	340203	20	4492
A7650h				68	2454	551681	32	7284
A7660w	76.2 x 60 (3) x (2.36)	2000 (78.74)	15.8 (.62)	43	401	90148	10.8	2428
A7660				57	742	166775	20	4492
A7660h				68	1203	270445	32	7284
A7670w	76.2 x 70 (3) x (2.76)	2000 (78.74)	15.8 (.62)	43	257	57776	10.8	2428
A7670				57	475	106885	20	4492
A7670h				68	771	173328	32	7284
A1050w	101.6 x 50 (4) x (1.97)	2000 (78.74)	15.8 (.62)	43	1767	397237	14.5	3260
A1050				57	3269	734889	27	6030
A1050h				68	5301	1191712	44	9779
A1060w	101.6 x 60 (4) x (2.36)	2000 (78.74)	15.8 (.62)	43	834	187491	14.5	3260
A1060				57	1543	346858	27	6030
A1060h				68	2502	562472	44	9779
A1070w	101.6 x 70 (4) x (2.76)	2000 (78.74)	15.8 (.62)	43	514	115552	14.5	3260
A1070				57	951	213771	27	6030
A1070h				68	1542	346655	44	9779
A1080w	101.6 x 70 (4) x (2.76)	2000 (78.74)	15.8 (.62)	43	364	81830	14.5	3260
A1080				57	673	151386	27	6030
A1080h				68	1092	245491	44	9779

The information herein is general in nature and is not intended for specific application purposes. We suggest that product samples be tested and approved based on your intended application. We reserve the right to alter specifications or withdraw products without prior notice.



Part Number	Dia. x Height mm (Inch) (B) x (H)	Length mm (Inch) (L)	Thickness mm (Inch) (S)	Quality NR  ShoreA Duro	Compression		Shear	
					Max. Static Load		Max. Static Load	
					kN	lbs	kN	lbs
A1250w	127 x 50 (5) x (1.97)	2000 (78.74)	15.8 (.62)	43	3236	727482	18	4047
A1250				57	5987	1345841	33	7486
A1250h				68	9708	2182445	54	12140
A1260w	127 x 60 (5) x (2.36)	2000 (78.74)	15.8 (.62)	43	1493	335640	18	4047
A1260				57	2762	620934	33	7486
A1260h				68	4479	1006919	54	12140
A1270w	127 x 70 (5) x (2.76)	2000 (78.74)	15.8 (.62)	43	899	202103	18	4047
A1270				57	1663	373891	33	7486
A1270h				68	2697	606310	54	12140
A1280w	127 x 80 (5) x (3.15)	2000 (78.74)	15.8 (.62)	43	623	140056	18	4047
A1280				57	1153	259104	33	7486
A1280w				68	1869	420168	54	12140
A1550w	152.4 x 50 (6) x (1.97)	2000 (78.74)	15.8 (.62)	43	5346	1201829	22	4946
A1550				57	9890	2223383	41	9150
A1550h				68	16038	3605486	66	14837
A1560w	152.4 x 60 (6) x (2.36)	2000 (78.74)	15.8 (.62)	43	2427	545611	22	4946
A1560				57	4490	1009381	41	9150
A1560h				68	7281	1636834	66	14837
A1580w	152.4 x 80 (6) x (3.15)	2000 (78.74)	15.8 (.62)	43	982	220762	22	4946
A1580				57	1817	408410	41	9150
A1580h				68	2946	662287	66	14837
A2050w	203.2 x 50 (8) x (1.97)	2000 (78.74)	15.8 (.62)	43	11642	2617226	29	6519
A2050				57	21538	4841868	54	12061
A2050w				68	34926	7851677	87	19558
A20100w	203.2 x 100 (8) x (3.94)	2000 (78.74)	15.8 (.62)	43	1145	257406	29	6519
A20100				57	2118	476202	54	12061
A20100h				68	3435	772219	87	19558
A30100w	304.8 x 100 (12) x (3.94)	2000 (78.74)	15.8 (.62)	43	2983	670605	43	9667
A30100				57	5519	1240619	80	17884
A30100h				68	8949	2011815	129	29000

The information herein is general in nature and is not intended for specific application purposes. We suggest that product samples be tested and approved based on your intended application. We reserve the right to alter specifications or withdraw products without prior notice.