

Applications

- Shipping Containers
- Silos
- Wind Power Plates
- Heavy Machinery
- Oil Pumps
- Railroad Tracks
- and almost any other application.

elasto-Sandwich-Bars are used in a very wide variety of application. The parts will absorb the vibration, movements and shock to protect the surrounding equipments.

CHARACTERISTICS AND CAPABILITIES OF ELASTO-SANDWICH-BARS.

-Motion Isolation: Production efficiency is only possible with preventable downtime. elasto-Sandwich-Bars will protect sensitive electric motors from motion.

-Vibration Absorption: Most machinery transfers vibrations to the immediate environment. With the installation of our elasto-Sandwich-Bars the vibration transfer will be prevented.

-Noise Reduction: All Machinery not isolated produce motion and noise. An effective isolation will be evident with the installation of our elasto-Sandwich-Bars

ELASTO-SANDWICH-BARS (ADVANCED DESIGN)

The design of the elasto-Sandwich-Bars are developed to absorb forces in shear and compression. These mounts have the unique ability to be custom designed without expensive tooling, which is very favorable for prototypes, small production or fast turnaround time. The parts can be used as a whole but also be cut, tapped, drilled and precise machined to fit to any required application.

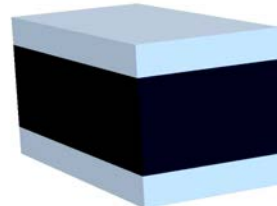
-Load Capacity: Different sizes for most applications. The load range of these 2 Meters Sandwich-Bars are from 10 kN (2,200 LBS) up to a 35,000 kN (7,850,000 LBS). Cut and drilled the load capacity can be as low as 100 N (20 lbs)

-Maintenance Free and Long Term Durability: The standard rubber compound is developed for the general industry and should not be used for high dynamic application or for extreme environment condition.

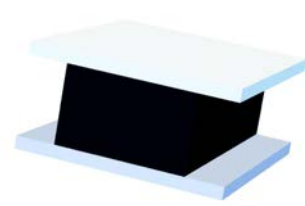
-elastometall provides over 800 different rubber compounds for all industry applications.



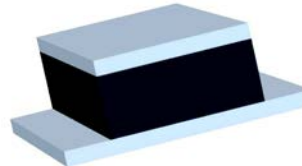
elasto-A-Sandwich-Bars



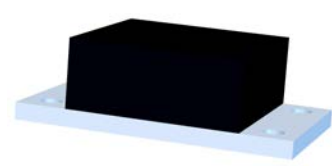
elasto-B-Sandwich-Bars



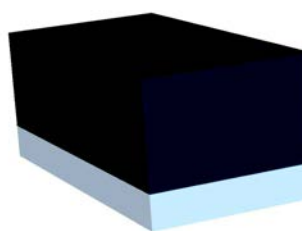
elasto-C-Sandwich-Bars



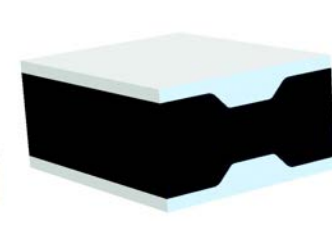
elasto-D-Sandwich-Bars



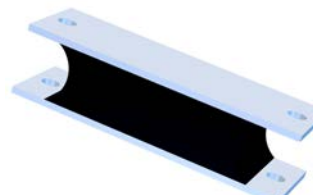
elasto-F-Sandwich-Bars



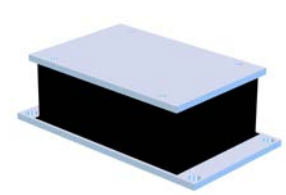
elasto-AII-Sandwich-Bars



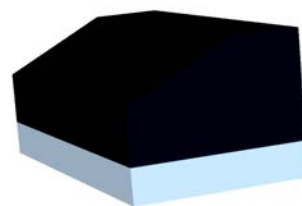
elasto-BT-Sandwich-Mounts



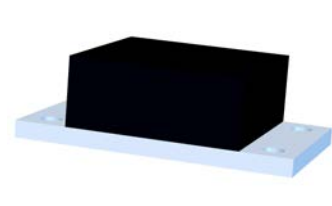
elasto-B-Sandwich-Mounts



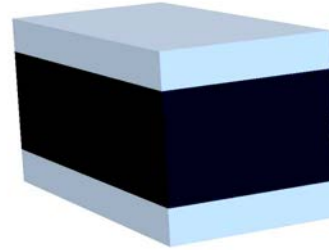
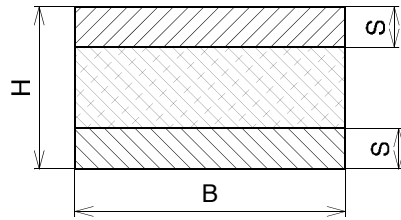
elasto-FS-Sandwich-Bars



elasto-D-Sandwich-Mounts

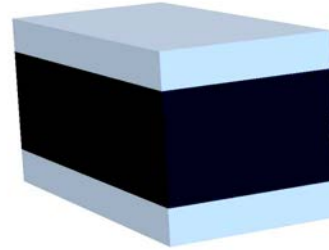
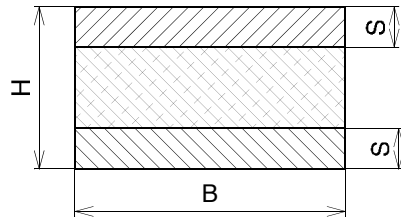


The information herein is general in nature and is not intended for specific application purposes. We suggest that product samples be tested and approved based on your intended application. We reserve the right to alter specifications or withdraw products without prior notice.



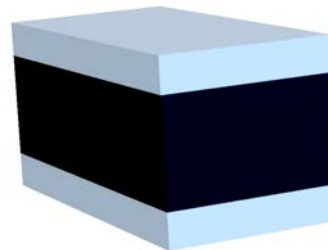
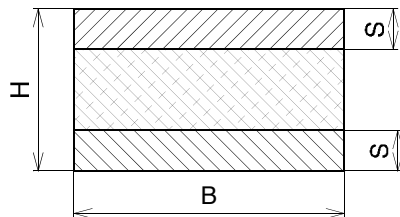
| Part Number | Dia. x Height mm (Inch) (B) x (H) | Length mm (Inch) (L) | Thickness mm (Inch) (S) | Quality NR ShoreA Duro | Compression | | Shear | |
|-------------|--|-------------------------------|----------------------------------|-------------------------------------|------------------|---------|------------------|------|
| | | | | | Max. Static Load | | Max. Static Load | |
| | | | | | kN | lbs | kN | lbs |
| A2530w | 25.4 x 30 (1) x (1.18) | 2000 (78.74) | 6.3 (.25) | 43 | 59 | 13264 | 3.6 | 809 |
| A2530 | | | | 57 | 109 | 24538 | 7 | 1497 |
| A2530h | | | | 68 | 177 | 39791 | 11 | 2428 |
| A3030w | 30 x 30 (1.18) x (1.18) | 2000 (78.74) | 10 (.39) | 43 | 86 | 19334 | 4.2 | 944 |
| A3030 | | | | 57 | 159 | 35767 | 8 | 1747 |
| A3030h | | | | 68 | 258 | 58001 | 13 | 2833 |
| A4020w | 40 x 20 (1.57) x (.79) | 2000 (78.74) | 1.2 10 | 43 | 2197 | 493905 | 5.7 | 1281 |
| A4020 | | | | 57 | 4064 | 913725 | 11 | 2371 |
| A4020h | | | | 68 | 6591 | 1481716 | 17 | 3844 |
| A4030w | 40 x 30 (1.57) x (1.18) | 2000 (78.74) | 10 (.39) | 43 | 239 | 53729 | 5.7 | 1281 |
| A4030 | | | | 57 | 442 | 99399 | 11 | 2371 |
| A4030h | | | | 68 | 717 | 161188 | 17 | 3844 |
| A5030w | 50.8 x 30 (2) x (1.18) | 2000 (78.74) | 10 (.39) | 43 | 762 | 171304 | 7.1 | 1596 |
| A5030 | | | | 57 | 1410 | 316913 | 13 | 2953 |
| A5030h | | | | 68 | 2286 | 513913 | 21 | 4788 |
| A5040w | 50.8 x 40 (2) x (1.57) | 2000 (78.74) | 10 (.39) | 43 | 241 | 54179 | 7.1 | 1596 |
| A5040 | | | | 57 | 446 | 100231 | 13 | 2953 |
| A5040h | | | | 68 | 723 | 162537 | 21 | 4788 |
| A5050w | 50.8 x 50 (2) x (1.97) | 2000 (78.74) | 10 (.39) | 43 | 135 | 30349 | 7.1 | 1596 |
| A5050 | | | | 57 | 250 | 56146 | 13 | 2953 |
| A5050h | | | | 68 | 405 | 91048 | 21 | 4788 |
| A6340w | 63.5 x 40 (2.5) x (1.57) | 2000 (78.74) | 10 (.39) | 43 | 441 | 99141 | 9.1 | 2046 |
| A6340 | | | | 57 | 816 | 183410 | 17 | 3785 |
| A6340h | | | | 68 | 1323 | 297422 | 27 | 6137 |
| A6350w | 63.5 x 50 (2.5) x (1.97) | 2000 (78.74) | 10 (.39) | 43 | 236 | 53055 | 9.1 | 2046 |
| A6350 | | | | 57 | 437 | 98152 | 17 | 3785 |
| A6350h | | | | 68 | 708 | 159165 | 27 | 6137 |
| A6360w | 63.5 x 60 (2.5) x (2.36) | 2000 (78.74) | 10 (.39) | 43 | 160 | 35969 | 9.1 | 2046 |
| A6360 | | | | 57 | 296 | 66543 | 17 | 3785 |
| A6360h | | | | 68 | 480 | 107908 | 27 | 6137 |

The information herein is general in nature and is not intended for specific application purposes. We suggest that product samples be tested and approved based on your intended application. We reserve the right to alter specifications or withdraw products without prior notice.



| Part Number | Dia. x Height mm (Inch) (B) x (H) | Length mm (Inch) (L) | Thickness mm (Inch) (S) | Quality NR ShoreA Duro | Compression | | Shear | |
|-------------|--|-------------------------------|----------------------------------|-------------------------------------|------------------|---------|------------------|------|
| | | | | | Max. Static Load | | Max. Static Load | |
| | | | | | kN | lbs | kN | lbs |
| A7050w | 70 x 50 (2.76) x (1.97) | 2000 (78.74) | 10 (.39) | 43 | 654 | 147025 | 10 | 2248 |
| A7050 | | | | 57 | 1210 | 271996 | 19 | 4159 |
| A7050h | | | | 68 | 1962 | 441075 | 30 | 6744 |
| A7060w | 70 x 60 (2.76) x (2.36) | 2000 (78.74) | 10 (.39) | 43 | 325 | 73063 | 10 | 2248 |
| A7060 | | | | 57 | 601 | 135166 | 19 | 4159 |
| A7060h | | | | 68 | 975 | 219189 | 30 | 6744 |
| A7070w | 70 x 70 (2.76) x (2.76) | 2000 (78.74) | 10 (.39) | 43 | 210 | 47210 | 10 | 2248 |
| A7070 | | | | 57 | 389 | 87338 | 19 | 4159 |
| A7070h | | | | 68 | 630 | 141630 | 30 | 6744 |
| A7650w | 76.2 x 50 (3) x (1.97) | 2000 (78.74) | 15.8 (.62) | 43 | 818 | 183894 | 10.8 | 2428 |
| A7650 | | | | 57 | 1513 | 340203 | 20 | 4492 |
| A7650h | | | | 68 | 2454 | 551681 | 32 | 7284 |
| A7660w | 76.2 x 60 (3) x (2.36) | 2000 (78.74) | 15.8 (.62) | 43 | 401 | 90148 | 10.8 | 2428 |
| A7660 | | | | 57 | 742 | 166775 | 20 | 4492 |
| A7660h | | | | 68 | 1203 | 270445 | 32 | 7284 |
| A7670w | 76.2 x 70 (3) x (2.76) | 2000 (78.74) | 15.8 (.62) | 43 | 257 | 57776 | 10.8 | 2428 |
| A7670 | | | | 57 | 475 | 106885 | 20 | 4492 |
| A7670h | | | | 68 | 771 | 173328 | 32 | 7284 |
| A1050w | 101.6 x 50 (4) x (1.97) | 2000 (78.74) | 15.8 (.62) | 43 | 1767 | 397237 | 14.5 | 3260 |
| A1050 | | | | 57 | 3269 | 734889 | 27 | 6030 |
| A1050h | | | | 68 | 5301 | 1191712 | 44 | 9779 |
| A1060w | 101.6 x 60 (4) x (2.36) | 2000 (78.74) | 15.8 (.62) | 43 | 834 | 187491 | 14.5 | 3260 |
| A1060 | | | | 57 | 1543 | 346858 | 27 | 6030 |
| A1060h | | | | 68 | 2502 | 562472 | 44 | 9779 |
| A1070w | 101.6 x 70 (4) x (2.76) | 2000 (78.74) | 15.8 (.62) | 43 | 514 | 115552 | 14.5 | 3260 |
| A1070 | | | | 57 | 951 | 213771 | 27 | 6030 |
| A1070h | | | | 68 | 1542 | 346655 | 44 | 9779 |
| A1080w | 101.6 x 70 (4) x (2.76) | 2000 (78.74) | 15.8 (.62) | 43 | 364 | 81830 | 14.5 | 3260 |
| A1080 | | | | 57 | 673 | 151386 | 27 | 6030 |
| A1080h | | | | 68 | 1092 | 245491 | 44 | 9779 |

The information herein is general in nature and is not intended for specific application purposes. We suggest that product samples be tested and approved based on your intended application. We reserve the right to alter specifications or withdraw products without prior notice.



| Part Number | Dia. x Height mm (Inch) (B) x (H) | Length mm (Inch) (L) | Thickness mm (Inch) (S) | Quality NR ShoreA Duro | Compression | | Shear | |
|-------------|--|-------------------------------|----------------------------------|-------------------------------------|------------------|---------|------------------|-------|
| | | | | | Max. Static Load | | Max. Static Load | |
| | | | | | kN | lbs | kN | lbs |
| A1250w | 127 x 50 (5) x (1.97) | 2000 (78.74) | 15.8 (.62) | 43 | 3236 | 727482 | 18 | 4047 |
| A1250 | | | | 57 | 5987 | 1345841 | 33 | 7486 |
| A1250h | | | | 68 | 9708 | 2182445 | 54 | 12140 |
| A1260w | 127 x 60 (5) x (2.36) | 2000 (78.74) | 15.8 (.62) | 43 | 1493 | 335640 | 18 | 4047 |
| A1260 | | | | 57 | 2762 | 620934 | 33 | 7486 |
| A1260h | | | | 68 | 4479 | 1006919 | 54 | 12140 |
| A1270w | 127 x 70 (5) x (2.76) | 2000 (78.74) | 15.8 (.62) | 43 | 899 | 202103 | 18 | 4047 |
| A1270 | | | | 57 | 1663 | 373891 | 33 | 7486 |
| A1270h | | | | 68 | 2697 | 606310 | 54 | 12140 |
| A1280w | 127 x 80 (5) x (3.15) | 2000 (78.74) | 15.8 (.62) | 43 | 623 | 140056 | 18 | 4047 |
| A1280 | | | | 57 | 1153 | 259104 | 33 | 7486 |
| A1280w | | | | 68 | 1869 | 420168 | 54 | 12140 |
| A1550w | 152.4 x 50 (6) x (1.97) | 2000 (78.74) | 15.8 (.62) | 43 | 5346 | 1201829 | 22 | 4946 |
| A1550 | | | | 57 | 9890 | 2223383 | 41 | 9150 |
| A1550h | | | | 68 | 16038 | 3605486 | 66 | 14837 |
| A1560w | 152.4 x 60 (6) x (2.36) | 2000 (78.74) | 15.8 (.62) | 43 | 2427 | 545611 | 22 | 4946 |
| A1560 | | | | 57 | 4490 | 1009381 | 41 | 9150 |
| A1560h | | | | 68 | 7281 | 1636834 | 66 | 14837 |
| A1580w | 152.4 x 80 (6) x (3.15) | 2000 (78.74) | 15.8 (.62) | 43 | 982 | 220762 | 22 | 4946 |
| A1580 | | | | 57 | 1817 | 408410 | 41 | 9150 |
| A1580h | | | | 68 | 2946 | 662287 | 66 | 14837 |
| A2050w | 203.2 x 50 (8) x (1.97) | 2000 (78.74) | 15.8 (.62) | 43 | 11642 | 2617226 | 29 | 6519 |
| A2050 | | | | 57 | 21538 | 4841868 | 54 | 12061 |
| A2050w | | | | 68 | 34926 | 7851677 | 87 | 19558 |
| A20100w | 203.2 x 100 (8) x (3.94) | 2000 (78.74) | 15.8 (.62) | 43 | 1145 | 257406 | 29 | 6519 |
| A20100 | | | | 57 | 2118 | 476202 | 54 | 12061 |
| A20100h | | | | 68 | 3435 | 772219 | 87 | 19558 |
| A30100w | 304.8 x 100 (12) x (3.94) | 2000 (78.74) | 15.8 (.62) | 43 | 2983 | 670605 | 43 | 9667 |
| A30100 | | | | 57 | 5519 | 1240619 | 80 | 17884 |
| A30100h | | | | 68 | 8949 | 2011815 | 129 | 29000 |

The information herein is general in nature and is not intended for specific application purposes. We suggest that product samples be tested and approved based on your intended application. We reserve the right to alter specifications or withdraw products without prior notice.